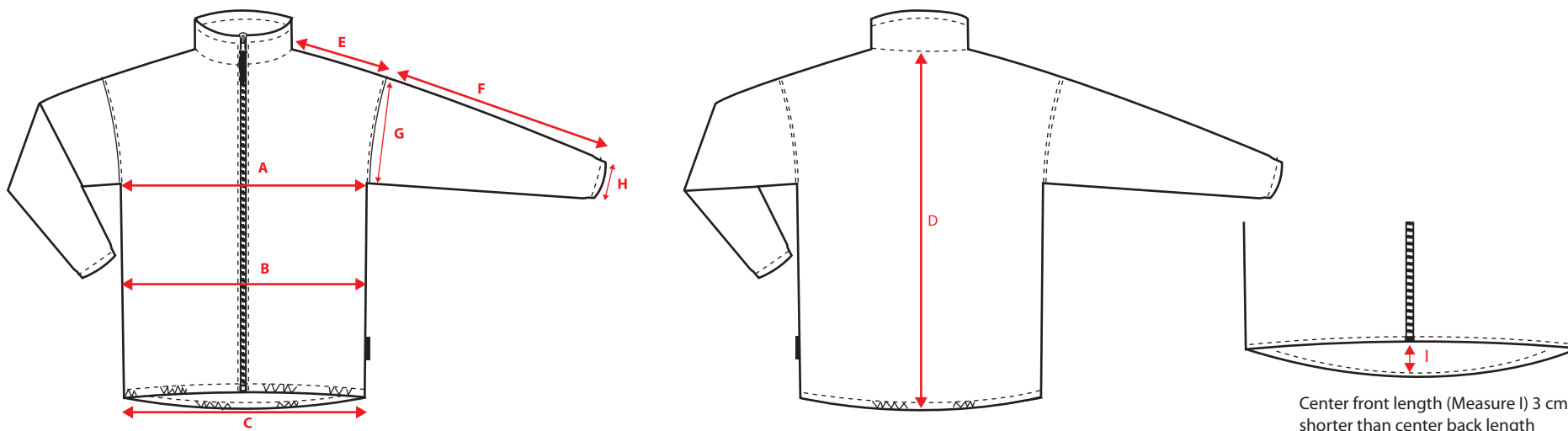




Measure: MH-245



Center front length (Measure I) 3 cm shorter than center back length

LADIES:

		34	36	38	40	42	44	
A	1/2 CHEST	45	48	50	52	55	58	
B	1/2 WAIST	41	44	46	48	51	54	
C	1/2 BOTTOM	43	46	48	50	53	56 *	
D	CBL. NECK TO BOTTOM	60	63	65	67	70	73	
E	SHOULDER	12,5	13	13,5	14	14,5	15	
F	SLEEVE LENGTH	55	57	59	61	63	65	
G	1/2 ARM HOLE	23	24	25	26	27	28 *	
H	SLEEVE OPENING	9	9	9,5	10	10	10,5	
I	Center front length	3 cm shorter than back length for all sizes						

MENS:

		XS	S	M	L	XL	XXL	XXXL	
A	1/2 CHEST	51	53	55	57	60	63	65	
C	1/2 BOTTOM	45	47	49	51	54	57	59 *	
D	CBL. NECK TO BOTTOM	68	70	73	75	78	81	84	
E	SHOULDER	13,5	14	15	16	17	17,5	18	
F	SLEEVE LENGTH	60	62	64	66	68	70	72 *	
G	1/2 ARM HOLE	24	25	26	27	28	29	30 *	
H	SLEEVE OPENING	9	9	10	10	11	12	12	
I	Center front length	3 cm shorter than back length for all sizes							

* Changes done 2017-02-28