

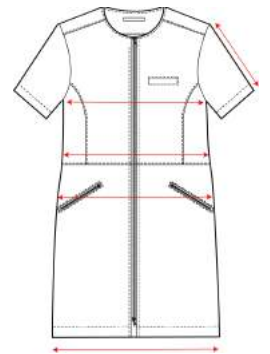
GARMENT MEASUREMENTS

Pls note that these are product measurements, not body measurements.

Measurements are taken when garment is laying flat on the ground.

These measurements are approximate and might vary slightly from garment to garment.

W1 - Bussarong	XS	S/XS	M/S	L/M	XL/M	XXL/XL	XXXL/XXL
CHEST	87	93	99	105	111	117	123
BOTTOM WIDTH	94	100	106	112	118	124	130
SLEEVE LENGTH	22	23	24	25	26	27	28
SHOULDER AT BACK 5 CM DOWN FR NECK	37	39	41	43	45	47	49
CENTERBACK LENGTH	65	67	69	71	73	76	77
W2 - Zip Top Short Sleeve	XS	S	M	L	XL		
1/2 CHEST (front)	39.5	45.5	51.5	57.5	63.5		
BOTTOMWIDTH, EXTENDED	109.0	115.0	121.0	127.0	133.0		
SLEEVE LENGTH, short	19.0	20.0	21.0	22.0	23.0		
CENTERBACK LENGTH	71.5	73.5	75.5	78.0	80.5		
W3 - Zip Dress Short Sleeve	XS	S	M	L	XL		
1/2 CHEST (front)	42.5	45.5	48.5	51.5	54.5		
BOTTOMWIDTH, EXTENDED	118.0	124.0	130.0	136.0	142.0		
WAIST	70.0	76.0	82.0	88.0	94.0		
HIP	89.0	95.0	101.0	107.0	113.0		
SLEEVE LENGTH, short	19.0	20.0	21.0	22.0	23.0		
CENTERBACK LENGTH	90.0	92.0	94.0	96.5	99.0		
W4 - Zip Top Half Sleeve	XS	S	M	L	XL		
1/2 CHEST (front)	39.5	45.5	51.5	57.5	63.5		
BOTTOMWIDTH, EXTENDED	109.0	115.0	121.0	127.0	133.0		
SLEEVE LENGTH, short	29.0	30.0	31.0	32.0	33.0		
CENTERBACK LENGTH	71.5	73.5	75.5	78.0	80.5		
W5 - Zip Dress Half Sleeve	XS	S	M	L	XL		
1/2 CHEST (front)	39.5	45.5	51.5	57.5	63.5		
BOTTOMWIDTH, EXTENDED	118.0	124.0	130.0	136.0	142.0		
WAIST	70.0	76.0	82.0	88.0	94.0		
HIP	89.0	95.0	101.0	107.0	113.0		
SLEEVE LENGTH, short	29.0	30.0	31.0	32.0	33.0		
CENTERBACK LENGTH	90.0	92.0	94.0	96.5	99.0		
W6 - Wrap top	XS	S	M	L	XL		
CHEST	84.0	90.0	96.0	102.0	108.0		
WAIST	72.0	78.0	84.0	90.0	96.0		
SLEEVE LENGTH, short	19.0	20.0	21.0	22.0	23.0		
CENTERBACK LENGTH	68.0	70.0	72.0	74.5	77.0		
W7 - Wrap Dress	XS	S	M	L	XL		
CHEST	82.0	88.0	94.0	100.0	106.0		
WAIST	72.0	78.0	84.0	90.0	96.0		
FRONT NECKDROP	5.8	6.0	6.2	6.4	6.6		
SLEEVE LENGTH, short	29.0	30.0	31.0	32.0	33.0		
CENTERBACK LENGTH	89.0	91.0	93.0	95.5	98.0		
W8 Ladies Soft Tank Top	XS	S	M	L	XL		
SHOULDER WIDTH	26.5	28.5	30.5	32.5	34.5		
1/2 CHEST	36.0	39.0	42.0	45.0	48.0		
1/2 BOTTOM WIDTH	37.0	40.0	43.0	46.0	49.0		
BODYLENGTH FROM TOP OF SHOULDER	60.0	62.0	64.0	66.5	69.0		
W9 - Ladies Soft Short Sleeve	XS	S	M	L	XL		
NECKWIDTH	20.0	20.5	21.0	21.5	22.0		
SHOULDER WIDTH	33.0	35.0	37.0	39.0	41.0		
1/2 CHEST	40.0	43.0	46.0	49.0	52.0		
1/2 BOTTOM WIDTH	42.0	45.0	48.0	51.0	54.0		
BODYLENGTH FROM TOP OF SHOULDER	57.0	59.0	61.0	63.5	66.0		
SLEEVELENGTH from shoulder seam	19.3	20.25	21.3	22.3	23.3		



W10 - Ladies Soft 3/4 Sleeve	XS	S	M	L	XL
NECKWIDTH	20.0	20.5	21.0	21.5	22.0
SHOULDER WIDTH	33.0	35.0	37.0	39.0	41.0
1/2 CHEST	40.0	43.0	46.0	49.0	52.0
1/2 BOTTOM WIDTH	42.0	45.0	48.0	51.0	54.0
BODYLENGTH FROM TOP OF SHOULDER	57.0	59.0	61.0	63.5	66.0
SLEEVELENGTH from shoulder seam	42.0	43.5	45.0	46.5	48.0
W11 - Ladies Easy Pants	XS	S	M	L	XL
WAIST RELAXED	62.0	66.0	70.0	74.0	78.0
HIP	94.0	100.0	106.0	112.0	118.0
THIGH	58.5	61.0	63.5	66.0	68.5
INSEAM long, EXCL RIB	65.0	65.0	67.0	67.0	69.0
W12 - Mens Easy Pant	XS	S	M	L	XL
WAIST RELAXED	70.0	74.0	78.0	82.0	86.0
HIP	94.0	100.0	106.0	112.0	118.0
THIGH	60.5	63.0	65.5	68.0	70.5
INSEAM long	66.0	66.0	68.0	68.0	70.0
W13 - Ladies Stretch Jeans	XS	S	M	L	XL
WAIST RELAXED	66.0	70.0	74.0	78.0	82.0
HIP	78.5	84.5	90.5	96.5	102.5
THIGH	50.0	52.5	55.0	57.5	60.0
INSEAM long	79.5	79.5	81.5	81.5	83.5
W14 - Ladies Straight Pants	XS	S	M	L	XL
WAIST RELAXED	69.0	73.0	77.0	81.0	85.0
HIP	77.0	83.0	89.0	95.0	101.0
THIGH	52.0	55.0	58.0	61.0	64.0
INSEAM long	75.5	75.5	77.5	77.5	79.5
W15 - Mens Stretch Jeans	XS	S	M	L	XL
WAIST RELAXED	74.0	79.0	84.0	90.0	96.0
HIP	85.0	90.0	96.0	102.0	108.0
THIGH	55.0	57.5	60.5	63.5	66.5
INSEAM long	79.0	81.0	83.0	85.0	87.0
W16 - Mens Polo Shirt	XS	S	M	L	XL
1/2 CHEST	47.0	50.0	53.0	56.0	59.0
1/2 BOTTOM WIDTH	47.0	50.0	53.0	56.0	59.0
BODYLENGTH FROM TOP OF SHOULDER, at front	64.0	66.0	68.0	70.5	73.0
SLEEVE LENGTH FR SHOULDER SEAM	21.0	22.0	23.0	24.0	25.0
W19 - Ladies Polo Shirt	XS	S	M	L	XL
1/2 CHEST	40.0	43.0	46.0	49.0	52.0
1/2 BOTTOM WIDTH	42.5	45.5	48.5	51.5	54.5
BODYLENGTH FROM TOP OF SHOULDER, at front	58.0	60.0	62.0	64.5	67.0
1/2 WAIST	37.0	40.0	43.0	46.0	49.0
SLEEVE LENGTH FR SHOULDER SEAM	17.0	18.0	19.0	20.0	21.0
W17 - Mens Sweatshirt	XS	S	M	L	XL
1/2 CHEST	46.0	49.0	52.0	55.0	58.0
1/2 BOTTOM WIDTH	47.0	50.0	53.0	56.0	59.0
BODYLENGTH AT FRONT FR T.O.S.	65.0	67.0	69.0	71.5	74.0
SLEEVELENGTH FR SHOULDER SEAM	73.0	74.5	76.0	77.5	79.0
W18 - Ladies Sweatshirt	XS	S	M	L	XL
1/2 CHEST	42.0	45.0	48.0	51.0	54.0
1/2 BOTTOM WIDTH	46.0	49.0	52.0	55.0	58.0
BODYLENGTH AT FRONT FR T.O.S.	58.0	60.0	62.0	64.5	67.0
1/2 WAIST	40.0	43.0	46.0	49.0	52.0
SLEEVELENGTH FR SHOULDER SEAM	58.0	59.5	61.0	62.5	64.0

