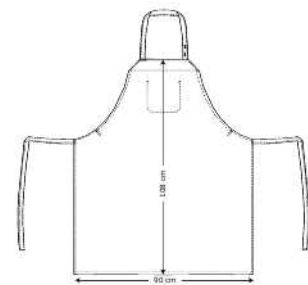


31502-101-0-0-211

Extra wide bib apron

KENTAUR[®]
Work Wear of Denmark



- Inside breast pocket on bib
- Adjustable neck strap with button and buttonhole
- Buttons are suitable for mangling
- Sewn bands
- Straps for hanging up in a steamer
- W: 90 cm x H: 108 cm

Quality: 65/35% P/C, 245 g/m²

Colour: mocca 211

Construction: 2X1 Twill

Size: one size



Washing instructions

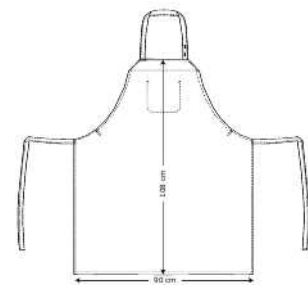
+/- 1 cm

		UNI
Length center front	A	108
Waistwidth	C	90

31502-101-0-0-420

Extra wide bib apron

KENTAUR[®]
Work Wear of Denmark



- Inside breast pocket on bib
- Adjustable neck strap with button and buttonhole
- Buttons are suitable for mangling
- Sewn bands
- Straps for hanging up in a steamer
- W: 90 cm x H: 108 cm

Quality: 65/35% P/C, 245 g/m²

Colour: heather 420

Construction: 2X1 Twill

Size: one size

VAT
dyed



Washing instructions

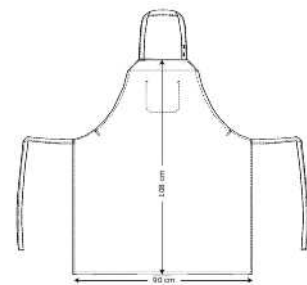
+/- 1 cm

		UNI
Length center front	A	108
Waistwidth	C	90

31502-101-0-0-604

Extra wide bib apron

KENTAUR[®]
Work Wear of Denmark



- Inside breast pocket on bib
- Adjustable neck strap with button and buttonhole
- Buttons are suitable for mangling
- Sewn bands
- Straps for hanging up in a steamer
- W: 90 cm x H: 108 cm

Quality: 65/35% P/C, 245 g/m²

Colour: postman blue 604

Construction: 2X1 Twill

Size: one size

VAT
dyed



Washing instructions

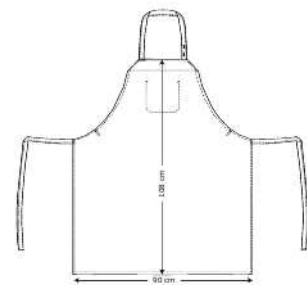
+/- 1 cm

		UNI
Length center front	A	108
Waistwidth	C	90

31502-101-0-0-709

Extra wide bib apron

KENTAUR[®]
Work Wear of Denmark



- Inside breast pocket on bib
- Adjustable neck strap with button and buttonhole
- Buttons are suitable for mangling
- Sewn bands
- Straps for hanging up in a steamer
- W: 90 cm x H: 108 cm

Quality: 65/35% P/C, 245 g/m²

Colour: charcoal 709

Construction: 2X1 Twill

Size: one size

VAT
dyed



Washing instructions

+/- 1 cm

		UNI
Length center front	A	108
Waistwidth	C	90